



Add: Badu Community, Zhenze Town, Wujiang District, Suzhou City, Jiangsu Province, China
Phone: 400-0630-188
E-mail: zhongnangg@gmail.com



**ZHONGNAN
STEEL STRUCTURE**



Zhongnan Steel Structure

Zhongnan Steel Structure

Zhongnan Steel Structure

Zhongnan Steel Structure

CONTENTS



CONTAINER HOUSE PREFAB CONTAINER STEEL STRUCTURE STEEL VILLA PORTABLE TOILE EXPANDABLE CONTAINER HOUSE

Introduction:

Suzhou Zhongnan Steel Structure Co., Ltd. is a professional manufacturer of living container houses , color steel sandwich plate, steel structure and color steel plate mobile house manufacturing enterprises. We have automatic spraying line, automatic laser cutting machine, tile machine, profile machine and other equipment to produce container houses.

02

Engineering and Design

Construction drawing design

04

Prefabricated house

Modular Shipping container house
K-prefabricated house
Mobile toilet

01

About ZHONGNAN

Production lines
Corporate culture
Enterprise honor

03

Container house

Assemble container house
Flat pack container house
Folding container house
Expandable container house

05

Customized house

Light steel villa
Sandwich Panel



01 ABOUT ZHONGNAN



PHYSICAL FACTORY

Our company has passed CE, SGS, ISO14001, ISO15001, ISO9001, Quality Environmental Assessment Certification, Product Qualification Certification, and Steel Structure Level 3 Qualification Certification.

COMPANY ADVANTAGE

Zhongnan has its own R & D, production and manufacturing team, engineering and technical team, sales and service team. The products are exported to the United States, Australia, Canada, Philippines, Thailand, Indonesia, South Africa and etc.

AFTER-SALESSYSTEM

300 well-trained workers, 8 high standard engineer and, 80 experienced installation workers team ensure high efficiency. In addition, Zhongnan has a number of tooling machine to produce container houses, and we still has 2 wall panel production lines.

Locations



We are located in Suzhou, China, close to Shanghai and Ningbo ports, with convenient transportation advantages.

Corporate culture

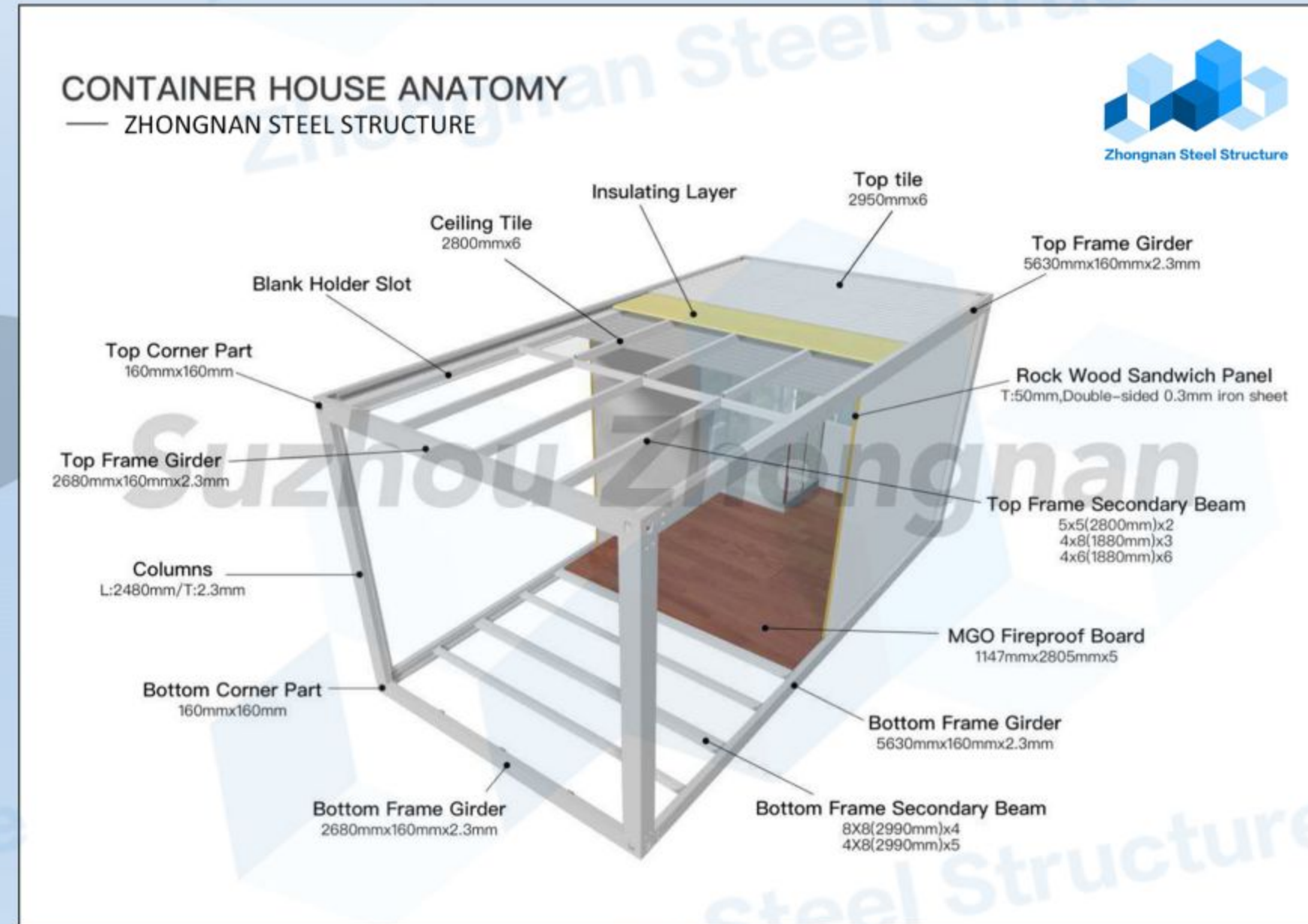


Enterprise honor



03 Container House

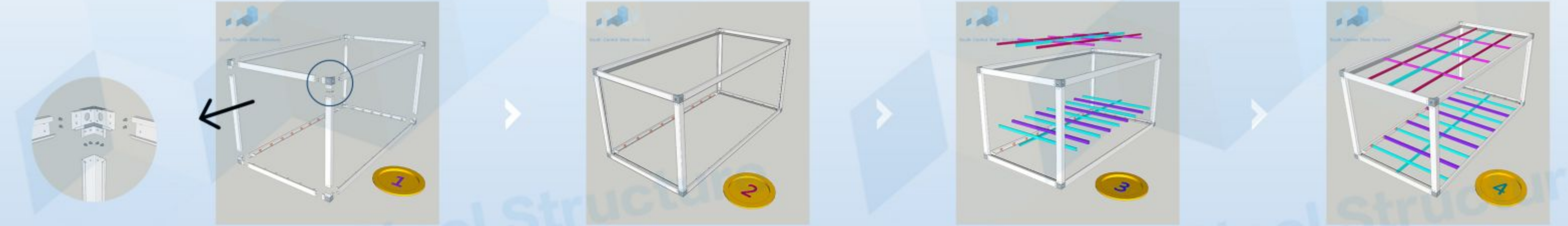
Assemble container house



Advantages:

1. Save Shipping Cost: 17 unit fitted into 1X40'HQ
2. Easy installation : 2 sets 4 workers 1 day
3. Cost-effective and Affordable

installation:



cabinet packing:



combination:



Assemble container house



Advantages:

1. Save Shipping Cost: 17 units fitted into 1X40'HQ
2. Easy installation : 2 sets 4 workers 1 day
3. Cost-effective and Affordable

Floor plan	zn-001
	Dimension
	L: 5950mm / 20ft W: 3000mm / 10ft H: 2800mm / 9.4ft
	Area
	18m ²

Floor plan	zn-002
	Dimension
	L: 5950mm / 20ft W: 6010mm / 20ft H: 2800mm / 9.4ft
	Area
	35m ²

Floor plan	zn-003
	Dimension
	L: 11900mm / 40ft W: 6010mm / 20ft H: 2800mm / 9.4ft
	Area
	70m ²

Floor plan	zn-004
	Dimension
	L: 5950mm / 20ft W: 3000mm / 20ft H: 2800mm / 9.4ft
	Area
	18m ²



PROJECT

The Philippine Construction Company Project, with a total of nearly 100 sets of assemble container house, including canteen, office, clinic, security room, rest room and other buildings, was built by foreign agent professional installation team in 5 weeks.



Detail:



Easy to install:



1 . Install frame



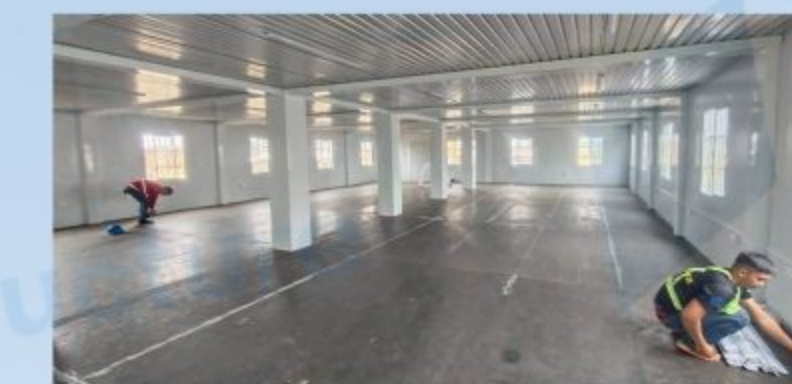
2 . Install wall panels



3 . Install windows and doors



4 . Install floor



5 . Install electricity



6 . Finish



PROJECT

Suzhou Zhongnan Steel Structure teamed up with CSCEC to build a large container isolation room project, which took two months to create a warm and comfortable living space, making people feel at home.



PROJECT

The products are all on the spray line, zero formaldehyde, odorless, with strong color adhesion, uniform color, quality assurance, and a complete set of test reports. The product can be customized to meet the needs of all customers for building application scenarios.

Flat pack container house



old



new

Specification	Details	
External dimensions	6058mm(L)*2438mm(W)*2896mm(H)	
Internal dimensions	5858mm(L)*2238mm(W)*2505mm(H)	
Loading Capacity	6pcs/40'HQ	
	Bottom loads	2.0kN/m ²
	Roof loads	0.75kN/m ²
	Wind loads	0.50kN/m ²
	Seismic rating	8
	Fire rating	Class A Non-combustible
	Thermal Insulation	0.62w/ (sqm.K)
		3
	Foldable times	180+
	Wall panel Heat preservation	0.043 (W/ (m. K))
	Wall panel sound insulation	15 dB
	Life time	10 -15 years

Advantages:

- 1 . Come with completed roof floor
- 2 . Electric wires run over ceiling , including DB , breaker power inlet & sockets
- 3 . Fully galvanized steel structure
- 4 . 50 / 75mm EPS / EPS / Rock wool / Glass wool / PU Sandwich Panel for wall .
- 5 . Steel door UPVC double glass windows with security bar
- 6 . PVC indoor lining

installation:



internal display:



projects:



Floor plan

ZNFP-01		
Dimensions	L	6058mm
	W	2438mm
	H	2896mm
Area		14.75m ²
Configuration		Bedroom Toilet Shower room Wash basin
Floor Plan		

ZNFP-02		
Dimensions	L	6058mm
	W	2438mm
	H	2896mm
Area		14.75m ²
Configuration		Bedroom Toilet Shower room Wash basin
Floor Plan		

ZNFP-03		
Dimensions	L	6058mm
	W	2438mm
	H	2896mm
Area		14.75m ²
Configuration		Bedroom
Floor Plan		

ZNFP-04		
Dimensions	L	6058mm
	W	2438mm
	H	2896mm
Area		14.75m ²
Configuration		Bedroom Toilet Shower room Wash basin kitchen
Floor Plan		

SUZHOU ZHONGNAN STEEL STRUCTURE
ZNTO-05

Dimensions	L	5850mm
	W	2250mm
	H	2500mm
Area		13.16m ²
Configuration		Toilet Wash basin

Floor Plan

SUZHOU ZHONGNAN STEEL STRUCTURE
ZNTO-06

Dimensions	L	5850mm
	W	2250mm
	H	2500mm
Area		13.16m ²
Configuration		Toilet Wash basin

Floor Plan

SUZHOU ZHONGNAN STEEL STRUCTURE
ZNTO-07

Dimensions	L	5850mm
	W	2250mm
	H	2500mm
Area		13.16m ²
Configuration		Shower room

Floor Plan

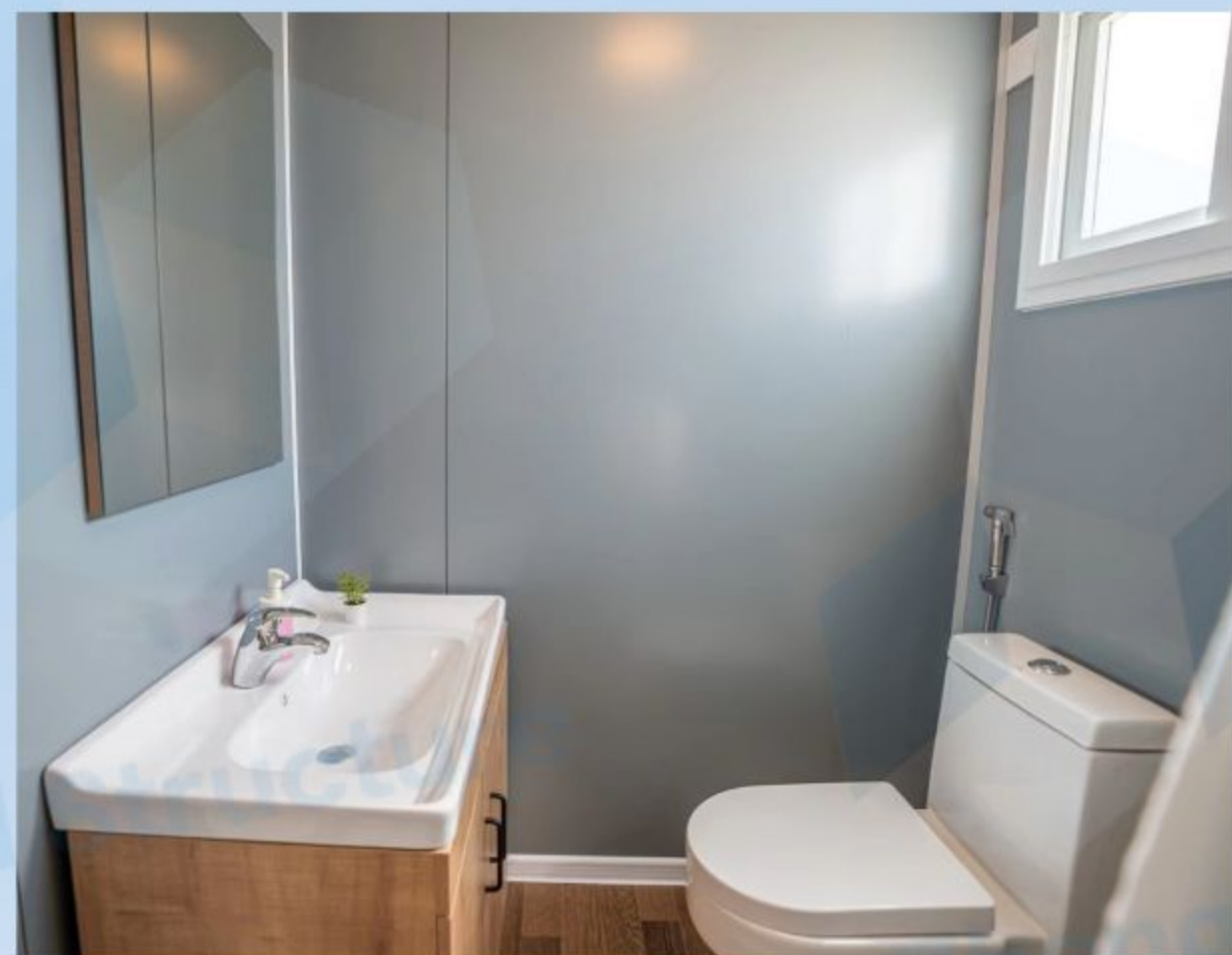
SUZHOU ZHONGNAN STEEL STRUCTURE
ZNTO-08

Dimensions	L	3000mm
	W	2250mm
	H	2500mm
Area		6.75m ²
Configuration		

Floor Plan

FIFA WORLD CUP Qatar 2022

RESIDENTIAL CONTAINER HOUSE SUPPLIER



PROJECT

Suzhou Zhongnan 2022 Qatar World Cup Resort Project

As a supplier of container houses for residents in the 2022 Qatar World Cup project, it provides daily accommodation for athletes.

Zhongnan has rich experience in the construction of large-scale container houses at home and abroad, provide complete supporting services, stable product quality and efficient cooperation teams.



Residential container house

Suzhou Zhongnan has carried out strict quality control on each production link of this project. Customers have given very high evaluations to the products we delivered. We firmly believe that there will be more project cooperation between the two parties in the future.

FIFA WORLD CUP Qatar 2022

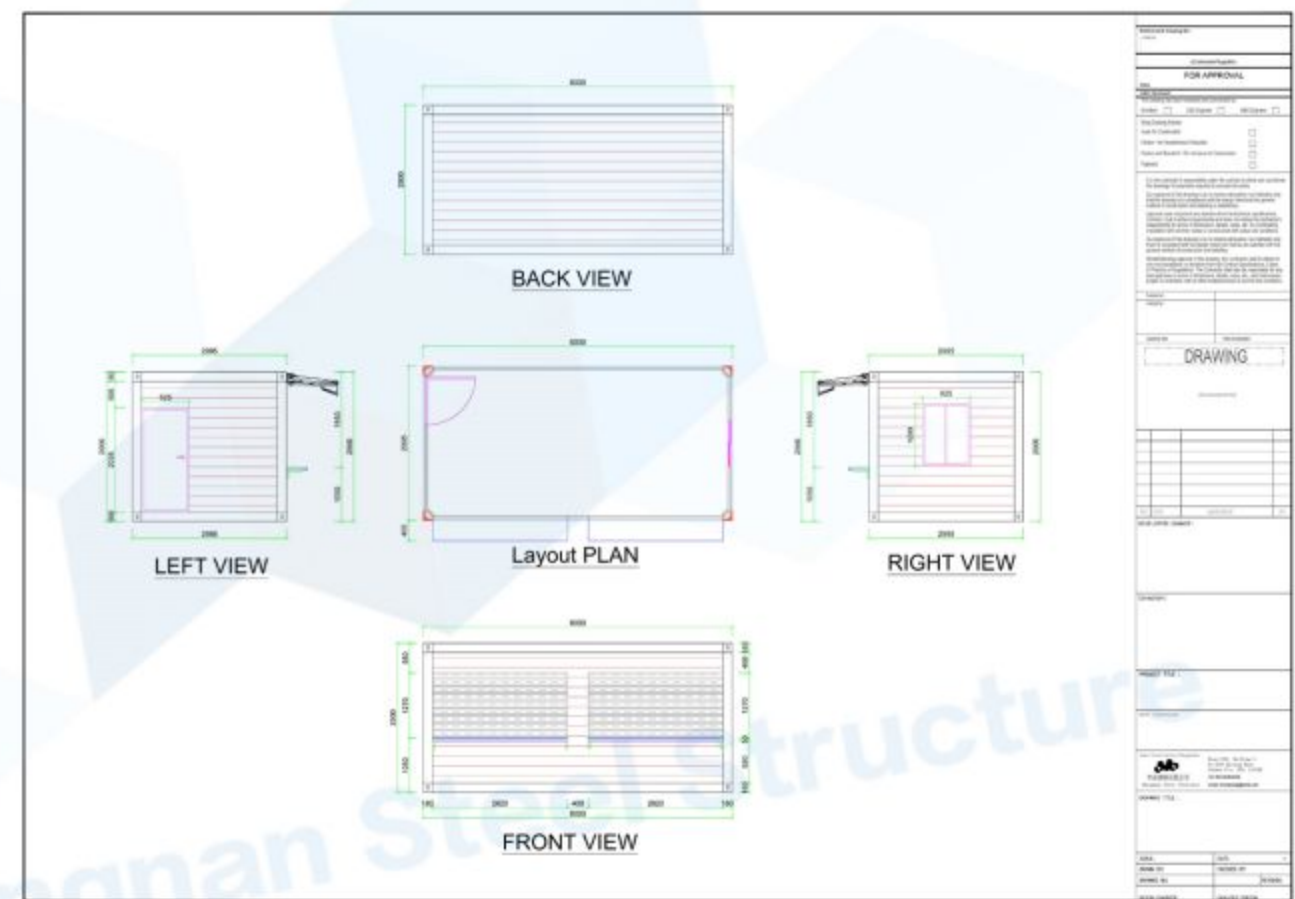
RESIDENTIAL CONTAINER HOUSE SUPPLIER



Container shop



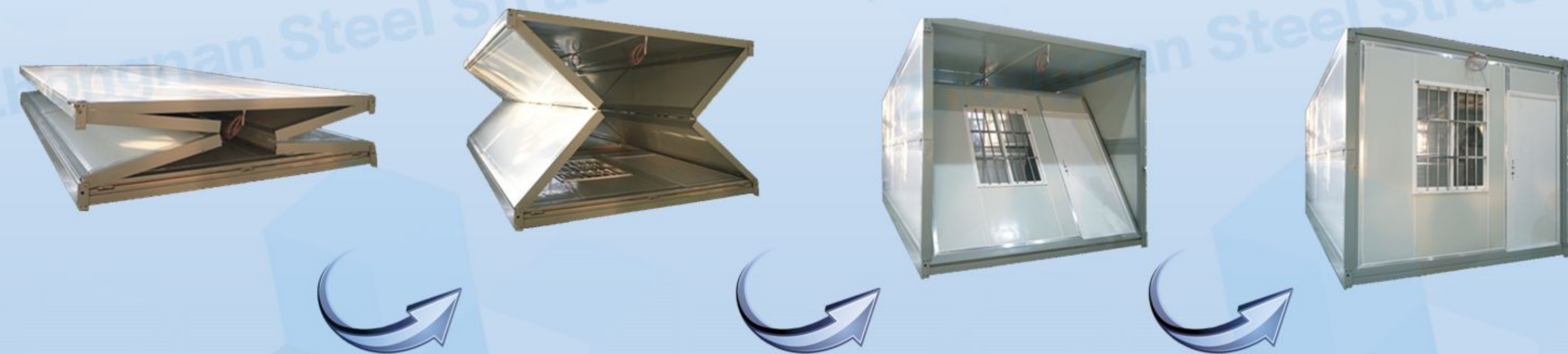
Mobile toilet



Folding container house

1 DAY OUTPUT **200** UNITS

3 MINUTES INSTALL **1** HOUSE

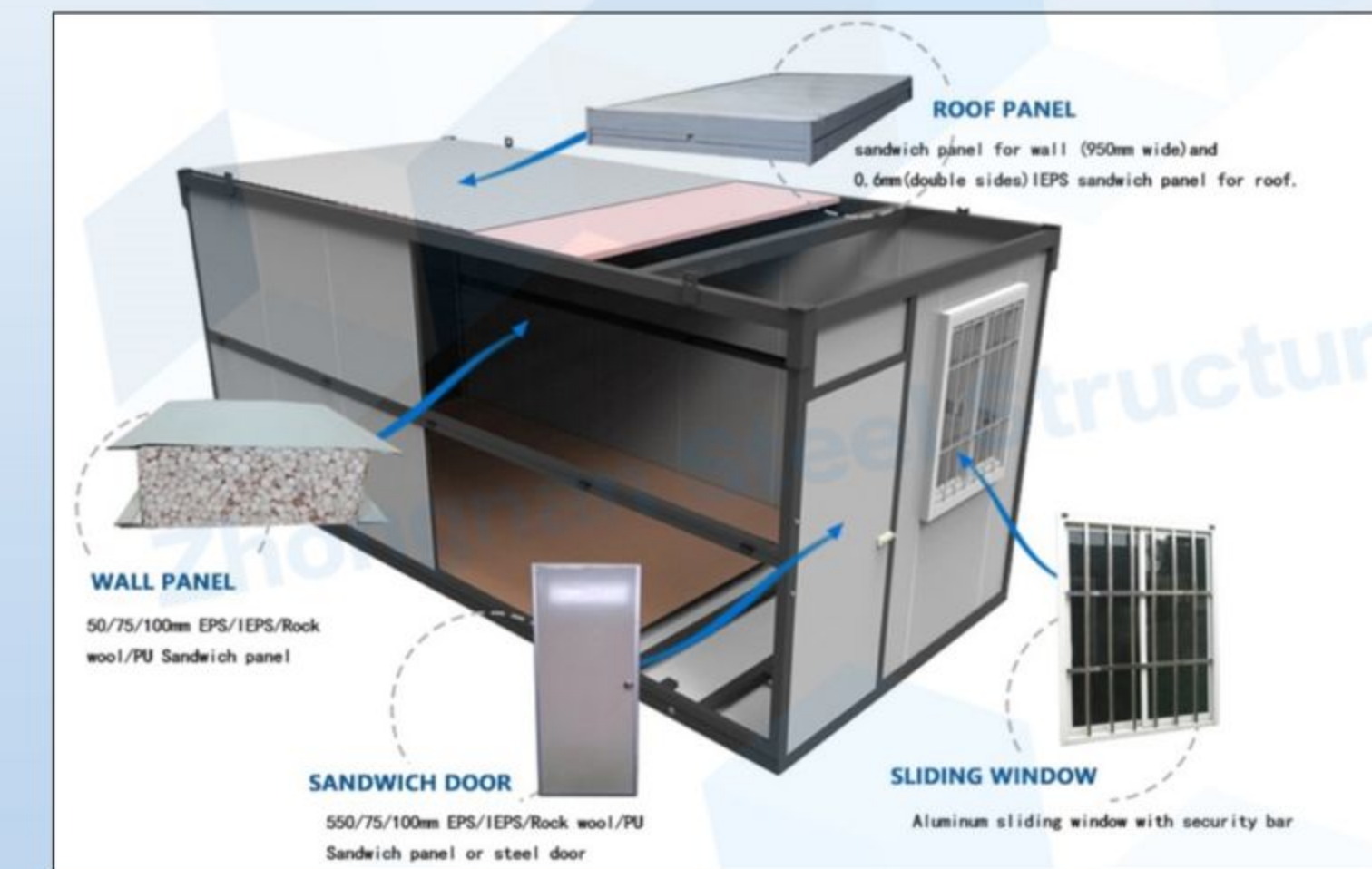


Advantages:

1. Galvanized steel structure
2. 40mm fireproof IEPS sandwich panel for wall roof
3. Aluminum sliding windows with security bar .
4. Fireproof LEPS sandwich panel door .
5. 18mm MGO board for floor
6. When is folded , the height is only 350mm



Specification	Details	
External dimensions	5800 (L) *2450 (W) *2500 (H)	
Internal dimensions	5670 (L) *2320 (W) *2320 (H)	
Loading Capacity	10pcs/40'HQ	
	Bottom loads	1.80kN/m ²
	Roof loads	0.5kN/m ²
	Wind loads	0.40kN/m ²
	Seismic rating	8
	Fire rating	Class A Non-combustible
	Thermal Insulation	0.6w/ (sqm.K)
		3
	Foldable times	180+
	Wall panel Heat preservation	0.043 (W/ (m . K))
	Wall panel sound insulation	5 dB
	Life time	10 -15 years



cabinet packing:

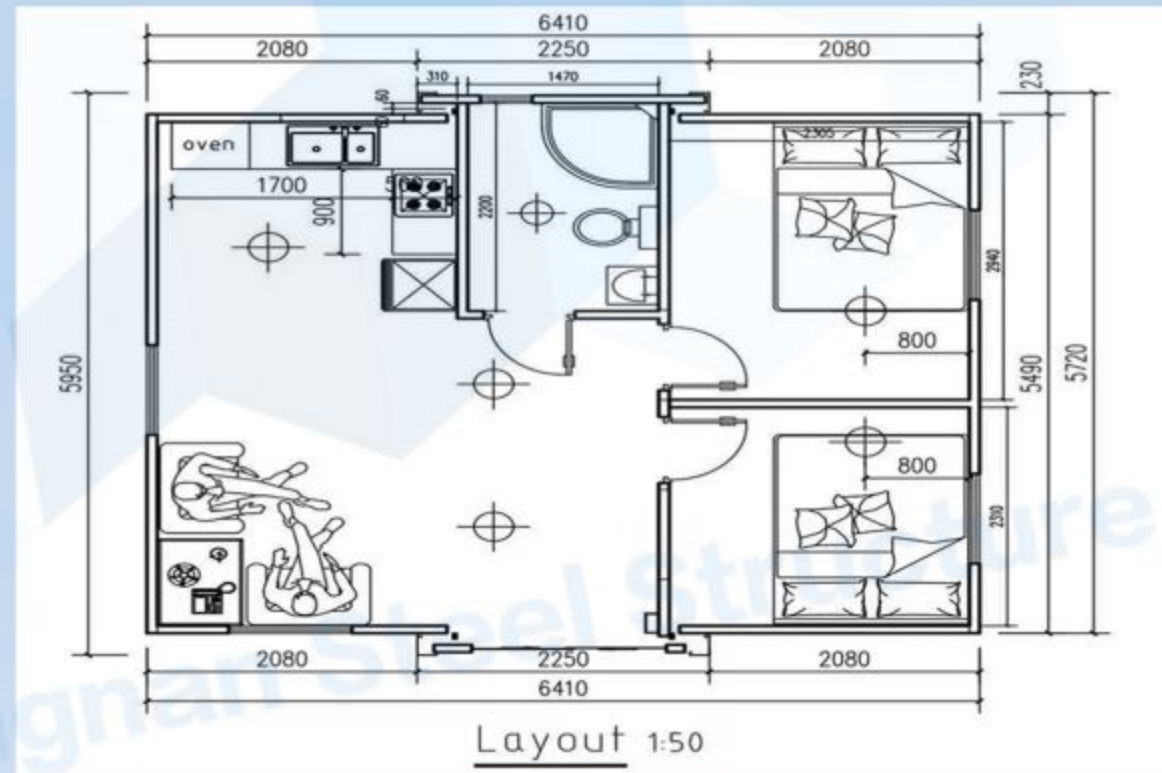


Expandable container house

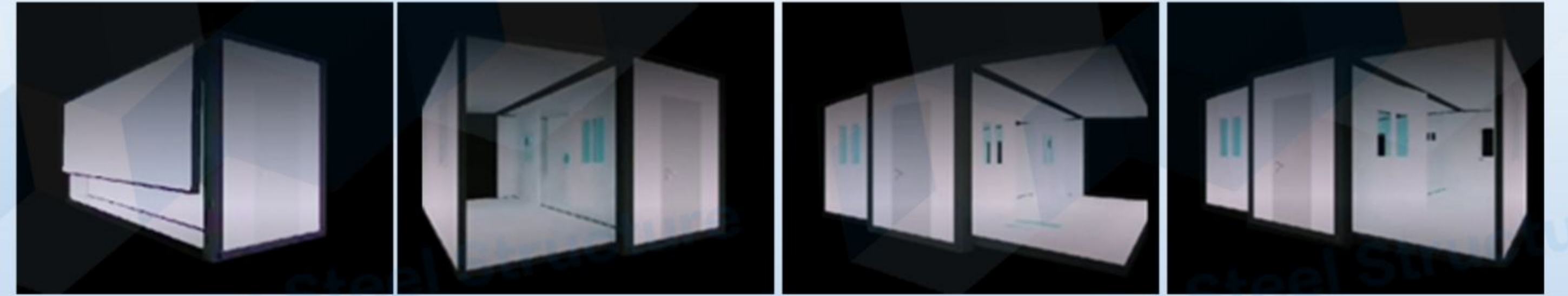


Advantages:

- 1 . Floor : Steel structure + Plywood + PVC vinyl flooring .
- 2 . Wall : 50mm EPS sandwich panel
- 3 . Roof : Fiberglass sandwich panel
- 4 . Window : Aluminum casement windows
- 5 . Door : Sandwich panel doors or aluminum sliding door .



installation: (A house that can unfold in 10 minutes)



internal display:



styles:



04 Prefabricated house

Modular Shipping container house



Advantages:

It looks similar as standard shipping container , compared with shipping comical and has bigger internal area. Even simple modifications can make it to be amazing dormitory, shop, restaurant, etc. All materials will be prefabricated in the factory.



K-Prefabricated House



Specification	
Life Span	12-15years
Wind resistance	88-117Km/h
Earthquack resistance	7 Grade
Structure	Q235 Steel
Partition wall	Sandwich panel
Wall	Sandwich panel
Roof	Sandwich panel
Window	PVC Silding window
Doors	Security door / Sandwich panel door
Installation time	100sqm/4 workers/ day

Advantages:

Taking the advantages of the strength of sandwich wall panels and roof panels, flat-roof prefab houses become afixed mobile housing system with connections of nails, bolts and self-tapping screws, slope-roof prefab houses, adopting light steel frame as its main structure , with standard modulus to arrange its space, as well as sandwich panels, PUtiles and roof systems. With easy installation and transportation, prefab houses are simple, beautiful, and can be used repeatedly, making temporary buildings become an industrialized product.



projects :



The area comparing form of slope style house

K house:1K=1.82m,1P=0.95m

Length	Width	ONE FLOOR (3P)			TWO FLOOR(6P)			THREE FLOOR(9P)		
		3K	4K	5K	3K	4K	5K	3K	4K	5K
4	K	45.53	59.07	72.61	103.79	130.87	157.95	176.04	216.66	257.28
5	K	56.67	73.52	90.38	126.97	160.68	194.39	211.27	261.83	312.39
6	K	67.81	87.98	108.14	150.16	190.49	230.82	246.51	307.01	367.50
7	K	78.95	102.43	125.90	173.35	220.30	267.26	281.74	352.18	422.61
8	K	90.09	116.88	143.67	196.53	250.11	303.69	316.98	397.35	477.72
9	K	101.22	131.33	161.43	219.72	279.93	340.13	352.21	442.52	532.83
10	K	112.36	145.78	179.19	242.91	309.74	376.57	387.45	487.70	587.94
11	K	123.50	160.23	196.96	266.09	339.55	413.00	422.68	532.87	643.05
12	K	134.64	174.68	214.72	289.28	369.36	449.44	457.92	578.04	698.16
13	K	145.78	189.13	232.48	312.47	399.17	485.88	493.16	623.21	753.27
14	K	156.92	203.58	250.25	335.65	428.98	522.31	528.39	668.38	808.38
15	K	168.06	218.03	268.01	358.84	458.79	558.75	563.63	713.56	863.49
16	K	179.19	232.48	285.77	382.03	488.61	595.19	598.86	758.73	918.60
17	K	190.33	246.93	303.54	405.21	518.42	631.62	634.10	803.90	973.71
18	K	201.47	261.38	321.30	428.40	548.23	668.06	669.33	849.07	1028.82
19	K	212.61	275.84	339.06	451.59	578.04	704.49	704.57	894.25	1083.93
20	K	223.75	290.29	356.83	474.77	607.85	740.93	739.80	939.42	1139.04
21	K	234.89	304.74	374.59	497.96	637.66	777.37	775.04	984.59	1194.15
22	K	246.02	319.19	392.35	521.15	667.48	813.80	810.27	1029.76	1249.26

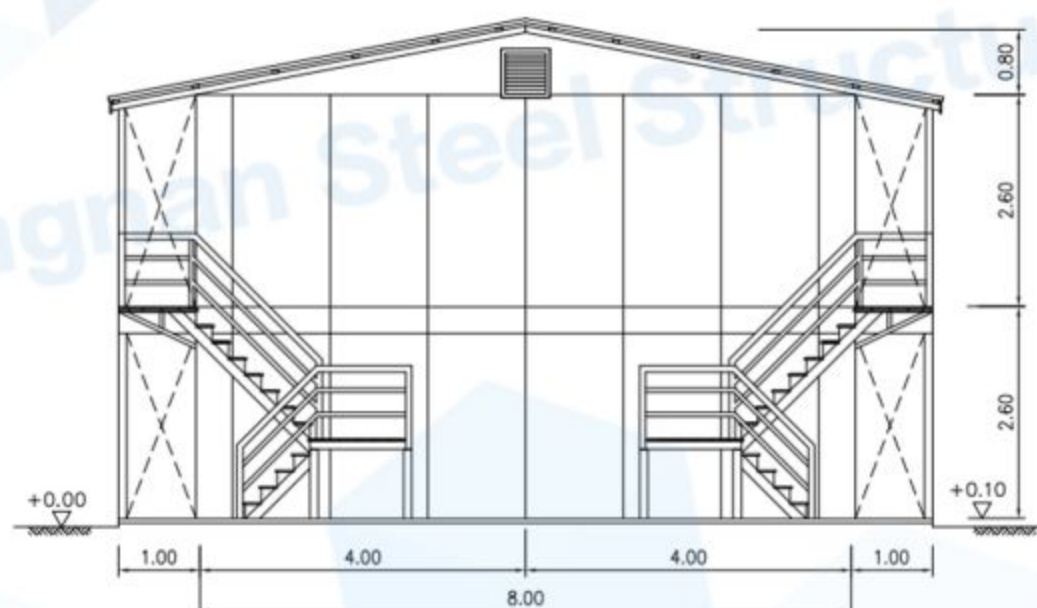
Explanation:

The two floor's house has two pcs stair in standard.Each side of gable wall has one.The stair's area is 4.5m²/pc.The three floor stair is 16m²/pc.The area will increase or reduce according the stair's quantity.

- The regular of area counting way:**
- 1.The house area:Exterior wall length× exterior wall width× floor number
 - 2.Standard stair:4.5m²/pc,corner stair(special for three floors house):16m²/pc.
 - 3.Awning area:house shadow area×0.5.
 4. Aisle board area:house shadow area.
 - 5.Total area=①+②+③+④
 - 6.Except the no standard house,this regular is suitable for all the house.
 - 7.Above regular also is fit for the flat style house.

Floor plan

Side view



Flat view



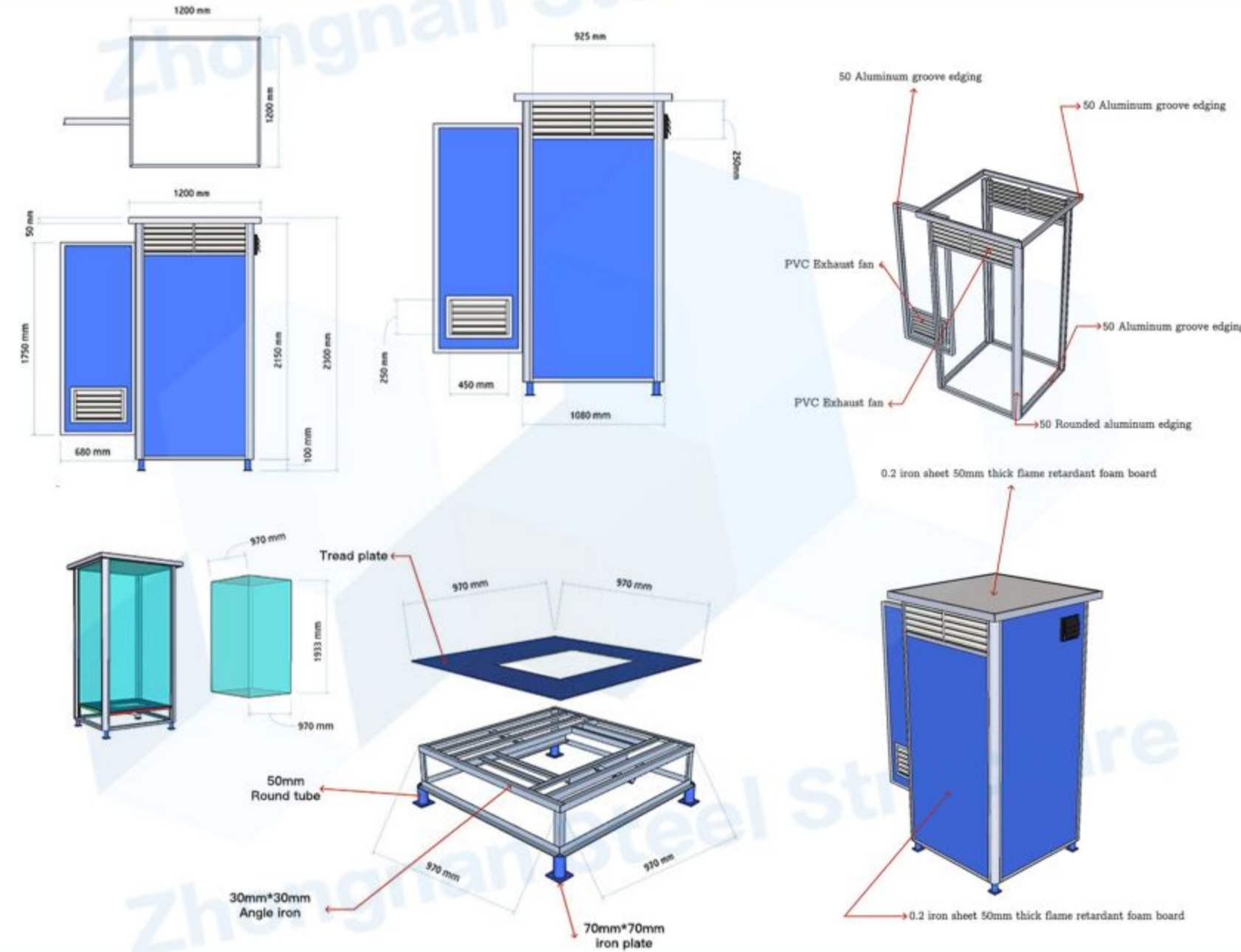
Mobile toilet

Advantages:

1. Wall: 50mm sandwich panel
2. Structure Alumin
3. Applications: construction site, public toilet on street/park, outdoor party, big activities



Introduction



Item	Toilet	Size (mm)	Equipment	
	Sitting	1100*1100*2300mm	Standard Sitting toilet & wash basin & exhaust fan & light & switch & socket	Optional: Shower+bidets+mirror+hook+waste tank
	Squat	1100*1100*2300mm		



05 Customized house

Light steel villa



PROJECT

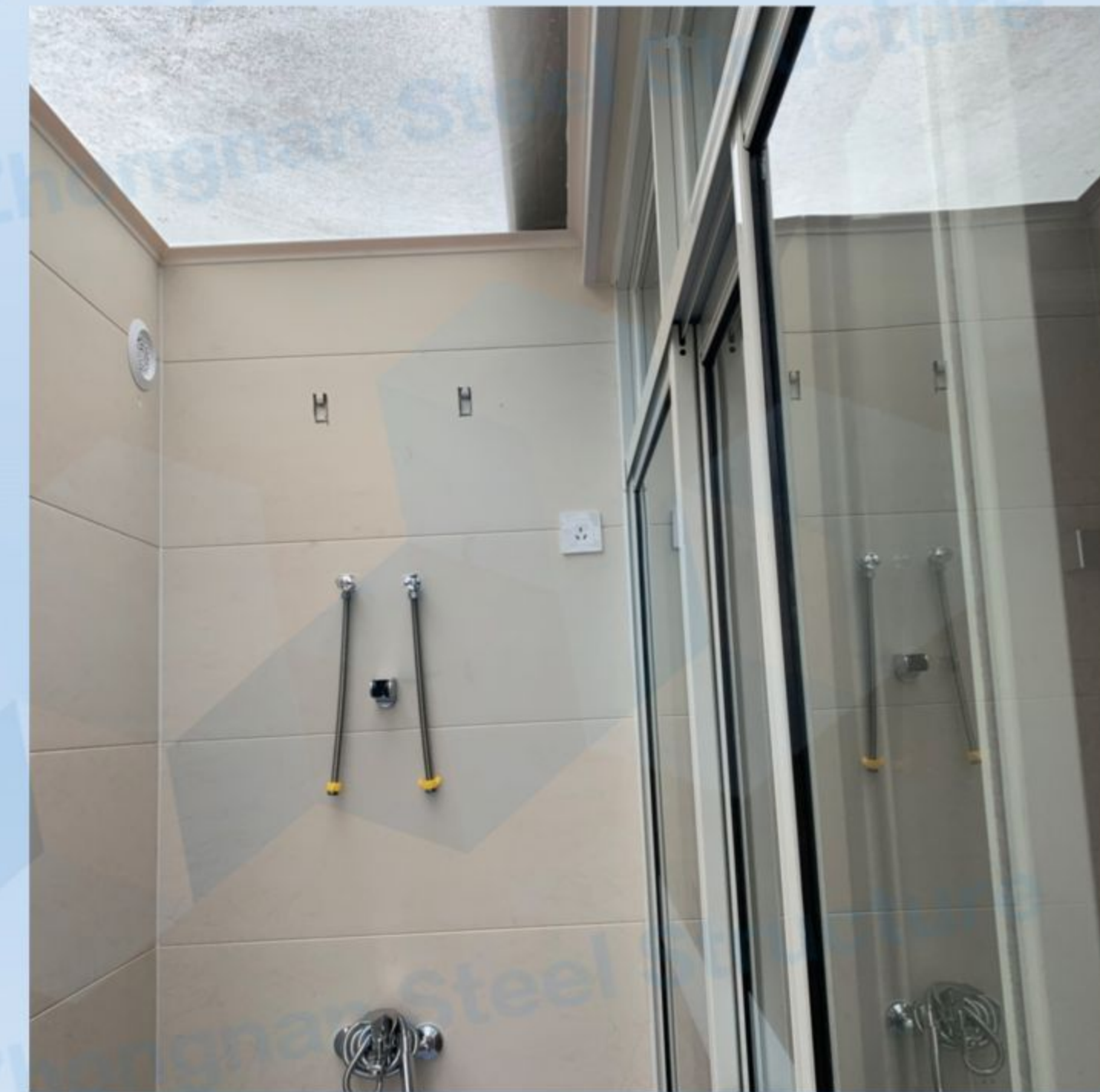




PROJECT



PROJECT

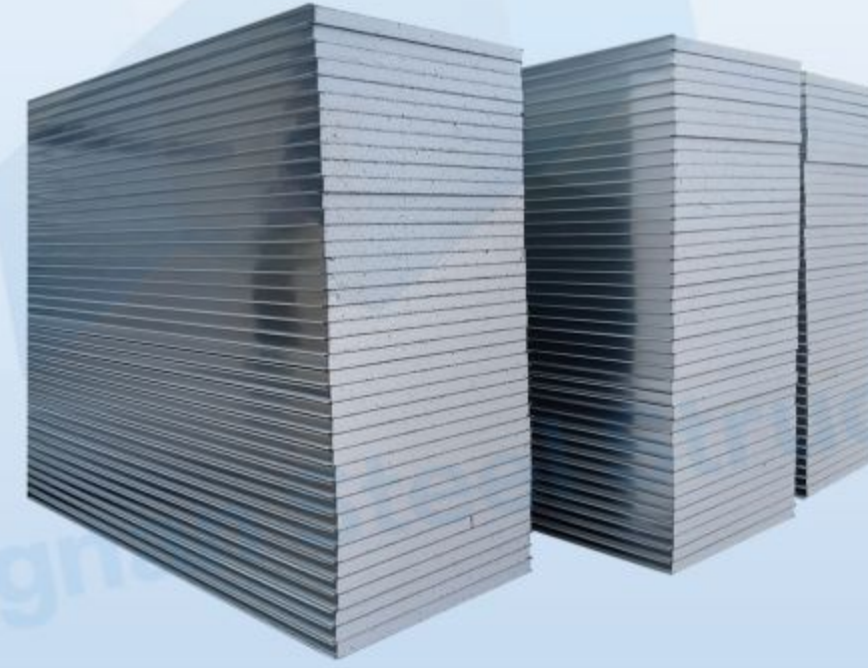


Sandwich Panel

Sandwich panels are widely used in prefab houses, container houses, light steel structure houses, etc., with a cost-effective advantage.

Specification:

1. Cost-Effectiveness
2. Sound Insulation
3. Fire Resistance
4. Thermal Insulation



Material (per inch)	K Value	R Value
Wood	0.76	1.25
Aluminum	15.5	N/A
Vinyl	0.97	N/A
Fiberglass Batts	0.3	3..33
Rockwool	0.3	3.33
EPS	0.03	4.00
Air Space	0.7	1.43
Drywall (gypsum)	1	1.00
Cement board	1.92	.052
Sand and Gravel	1.7	0.59
Poured Concrete	3.9	0.08
CMU (hollow)	1	1
Common Brick	5	0.11
Ceramic Tile	12.5	0.08
Marble	11	0.09

Introduction

